

LiDAR-derived Digital Terrain Model (DTM)

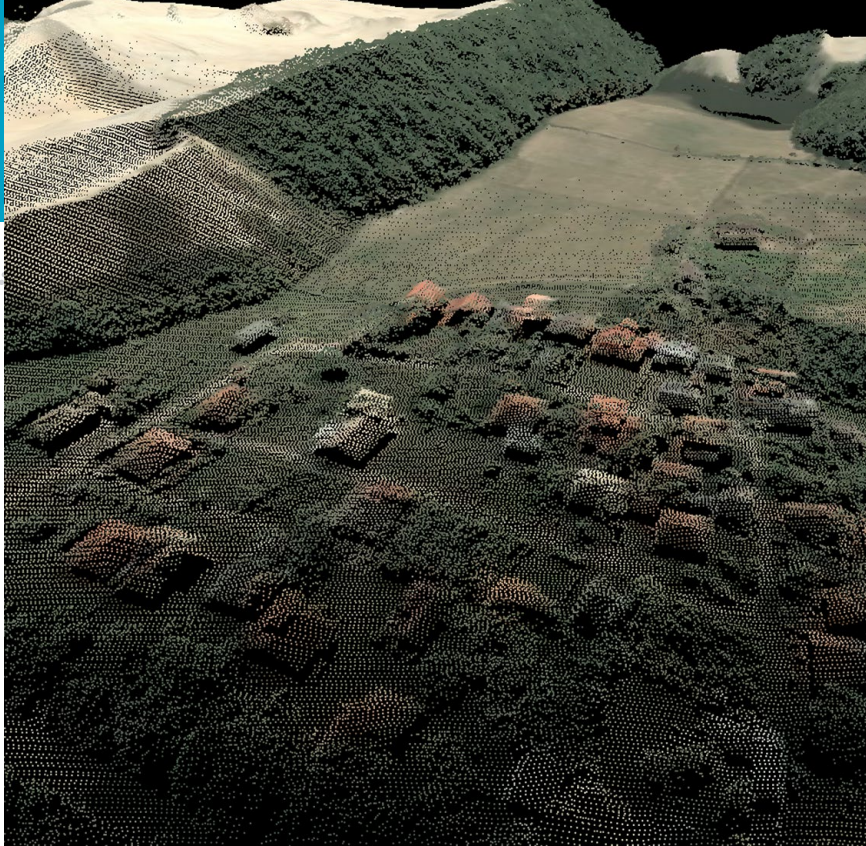
# Increasing the Value of a LiDAR Point Cloud with The Global Mapper LiDAR Module

**T**raditional mapping practices create a representation of the world from a two-dimensional, top-down perspective. The age-old challenge of projecting spatial data onto a two-dimensional plane is a direct consequence of this apparent necessity. Today's geospatial technology increasingly considers the third dimension in its analysis and data processing tasks, giving us a much more accurate and realistic view. This trend has served to elevate three-dimensional data formats such as LiDAR to the forefront of the geospatial industry.

Over the last decade, LiDAR data has evolved from a luxury commodity to a fairly ubiquitous and readily available resource. While the underlying technology has been around for more than 50 years, only relatively recently has LiDAR found its way into mainstream GIS. This rapid evolution can be attributed to both a steady decrease in the costs involved in the data collection process and perhaps more importantly, to an increase in awareness of LiDAR data and its potential application in a wide variety of fields.

Concurrent with the expanded availability of LiDAR data, many software companies have developed ever more powerful applications to process the raw point cloud files. These software offerings run the gamut from simple data viewers to complex analysis tools. Sitting squarely between these extremes is Global Mapper, an inexpensive desktop GIS application from Blue Marble Geographics. Among the 250 file formats that can be imported and exported by Global Mapper are LAS and LAZ, as well as several proprietary point

BY DAVID MCKITTRICK



LiDAR Point Cloud of a dune field encroaching on a residential community

cloud formats. More than just a viewing tool, Global Mapper offers an array of functions for querying, filtering, and editing a point cloud, all of which serve to increase the value of the data and to improve the precision of any analysis processes are applied to this data.

Global Mapper was an early supporter of LiDAR data formats and has been in a continual cycle of development ever since. This uniquely dynamic approach to software release process has ensured that Global Mapper is able to immediately address the ever-changing needs of the LiDAR-user community. As new versions of the LAS and LAZ formats are introduced or as new classifications are added to the format specifications, Global Mapper has been upgraded in real time to reflect these changes. Furthermore, as point clouds have increased in size—reflecting the exponential expansion in the geographic areas over which LiDAR data has been collected—Global Mapper's data handling capability has been updated to allow the efficient processing of datasets containing billions of points. This evolutionary process has

ultimately led to the development of the Global Mapper LiDAR Module, a collection of advanced LiDAR processing tools that is available as an add-on component to the software.

One of the persistent challenges when working with LiDAR is that data consumers are often many levels removed from those who actually collect the data. As a result, the specifications that are applied to the native files are often incompatible with the requirements for a particular project. This issue is most commonly seen in the classifications denoting the type of surface represented by each point. Commonly used classes include Unclassified (1), Ground (2), Low, Medium, and High Vegetation (3, 4, & 5), and Building (6). Depending on the data provider, the point cloud may or may not include the required classes and as result, it is often necessary to update or edit this component of the data.

The Global Mapper LiDAR module has been developed in large part to address this requirement and it provides many ways to update the classification of LiDAR points:

### Manual Classification

Global Mapper includes a powerful Digitizer function, which offers a suite of vector data creating and editing tools. Given that LiDAR points are inherently vector in format, it is very easy to select one or more points and simply update the original classification. Most LiDAR files contain tens or even hundreds of millions of points so manually editing many points using this method is impractical, however it does allow individual anomalies that might corrupt the data to be addressed.

### Geographic Reclassification

Global Mapper includes several advanced selection options that can be used to universally highlight and edit all objects within a defined geographic area. In this highlighted state, a universal edit can be applied to all points assigning a consistent classification that reflects the nature of the area. For instance, a building footprint layer could be used to select all points with the bounds of each building polygon so the classification of the points can be quickly and easily changed to the Building class.

### Tabular Filtering and Editing

As with all vector data, LiDAR points include an array of attributes that can either be displayed individually or in a tabular form. The Search function in Global Mapper offers this tabular perspective and it includes many options for sorting, querying, and filtering the data. As well as providing an easy way to remove unwanted points this powerful component of the software can be employed to collectively reclassify queried points.

## Cross-Sectional Reclassification

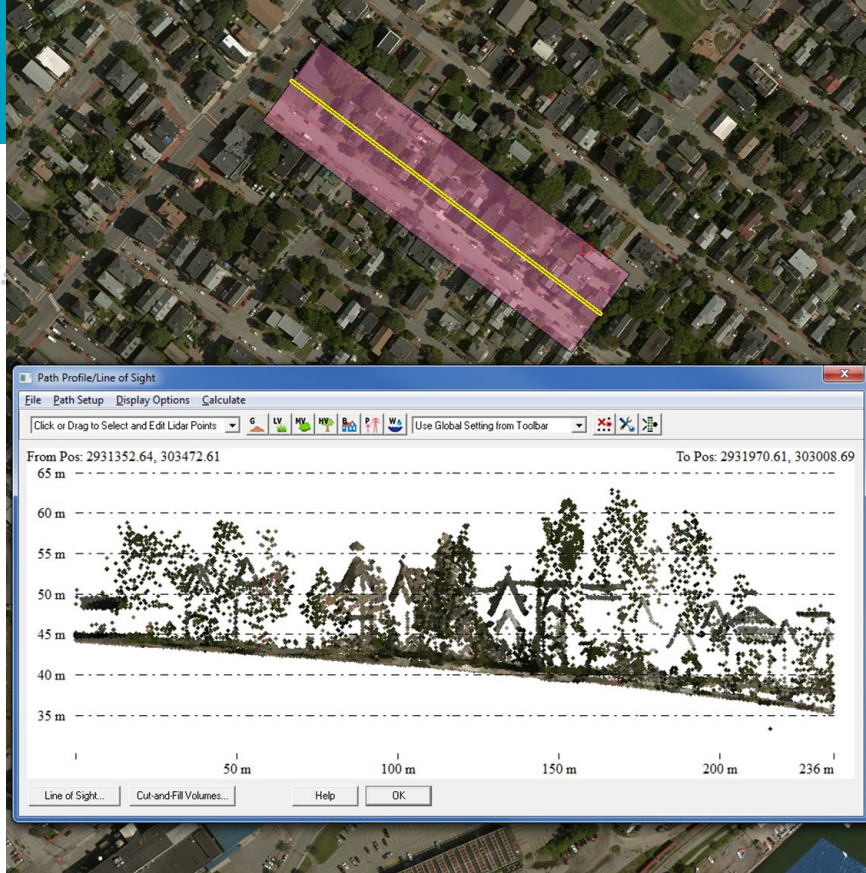
The Path Profile tool in Global Mapper was originally developed to display a cross-sectional view of a raster elevation layer. With the introduction of the LiDAR Module, this tool can now be applied to a point cloud. Defining a cross-sectional path through an array of points in the 2D map view triggers the display of a window that displays a lateral perspective of the same path. Extending the width of the swath outward from the original line provides the option to display all of the points covering a recognizable feature such as a building. Given that the corresponding points are clearly visible above the ground, they can be easily selected and reclassified to the appropriate classification value.

## Automatic Detection of Ground Points

Perhaps the most powerful feature of the Global Mapper LiDAR Module, the Automatic Ground Classification tool significantly increases the value of a point cloud by assigning the Ground classification to points that would otherwise be unusable for terrain surface creation and analysis. A complex and customizable algorithm is used to discern patterns in the point cloud that indicate the presence of a terrestrial surface as opposed to a raised feature. This process can even be applied to a point cloud in which all points are initially unclassified.

## Automatic Feature Extraction for Buildings and Trees

Similar to the ground detection procedure, a second automatic classification function recognizes non-ground points. Based on the relationship



Cross-sectional view of a point cloud showing a residential street scene in Portland, Maine

of a particular point to each of its neighbors, a point may be reclassified as being part of a building (recognized as an array of points sharing the same plane elevated by a specified height above the adjacent ground points) or as high vegetation or trees (recognized as a random array of points above a specified height from the ground). The LiDAR module even includes a tool to create 3D building and tree models derived from this classification.

## Automatic Assignment of an RGB value

Overlaying a point cloud on any satellite or aerial image provides an option to apply the RGB value to each point from the corresponding pixel in the imagery. This not only provides a photo realistic model of the features in the dataset when viewed in Global Mapper's 3D widow, but it also offers the means to query selected RGB values for the purpose of applying a classification based on each point's

visual characteristics. For instance, if all of the roofs in a particular area are of the same color, the corresponding points can be quickly selected and reclassified as buildings.

The value inherent in any dataset is fundamentally tied to its compatibility with the specified workflow or output requirements. This is especially true of LiDAR data, in which incorrectly or inappropriately classified points can render the data useless. The powerful data processing functionality in Global Mapper's LiDAR Module ensures that every point in a point cloud can be utilized for a specific purpose and genuinely erroneous points can be quickly and easily removed. ■

---

**David McKittrick** is employed as a Senior Application Specialist at Blue Marble Geographics in Hallowell, Maine. A graduate of the University of Ulster in Northern Ireland, McKittrick has spent over 20 years in the field of GIS and mapping, focusing on the application and implementation spatial technology.